

Name

Key

Date

1. Divide. Show the division in the right-hand column in two steps. The first two have been done for you.

a. $1.2 \div 6 = 0.2$

$$12 \text{ tenths} \div 6 = 2 \text{ tenths}$$

b. $1.2 \div 60 = (1.2 \div 6) \div 10 = 0.2 \div 10 = 0.02$

$$12 \text{ tenths} \div 60 = (12 \text{ tenths} \div 6) \div 10 = 2 \text{ tenths} \div 10 = 0.02$$

c. $2.4 \div 4 =$

.6

$$24 \text{ tenths} \div 4 = 6 \text{ tenths}$$

d. $2.4 \div 40 =$

 $2.4 \div 10 \div 4$.24 $\div 4$

.06

k. $3.45 \div 3 =$

1.15

l. $34.5 \div 300 =$

 $34.5 \div 100 \div 3$.345 $\div 3$

0.115

g. $0.34 \div 2 =$

.17

h. $3.4 \div 20 =$

.17

 $3.4 \div 10 \div 2$.34 $\div 2$

.17

2. Use place value reasoning and the first quotient to compute the second quotient. Explain your thinking.

a. $46.5 \div 5 = 9.3$

$46.5 \div 50 =$

0.93

Instead of 5 groups there are 50 groups. That is 10x's more groups, so there must be 10x's less in each group.

b. $29.4 \div 70 = 0.42$

$29.4 \div 7 =$

4.2

There are 10x's fewer groups, so there has to be 10x's more in each group.

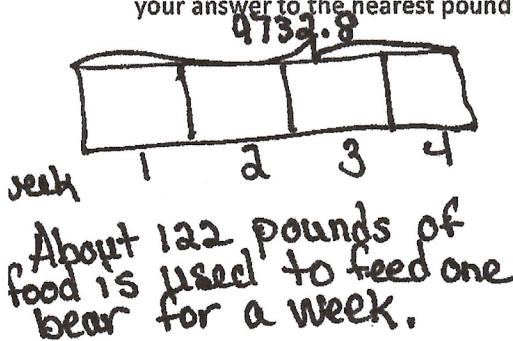
c. $13.6 \div 40 = 0.34$

$13.6 \div 4 =$

3.4

There are 10x's fewer groups, so each group must have 10x's more.

3. Twenty polar bears live at the zoo. In four weeks, they eat 9,732.8 pounds of food altogether. Assuming each bear is fed the same amount of food, how much food is used to feed one bear for a week? Round your answer to the nearest pound.



$4 \overline{) 9732.8}$

2433.2

86

17

16

13

12

12

8

2433.2

123...20

$20 \overline{) 2433.2}$

121.66

206

48

40

88

80

132

120

120

0

4. The total weight of 30 bags of flour and 4 bags of sugar is 42.6 kg. If each bag of sugar weighs 0.75 kg, what is the weight of each bag of flour?

$\begin{array}{r} .75 \\ \times 4 \\ \hline 3.00 \end{array}$

$\begin{array}{r} 42.6 \\ - 3.0 \\ \hline 39.6 \end{array}$

$30 \overline{) 39.6}$

1.32

36

96

90

60

The weight of each bag of flour is 1.32 kgs.