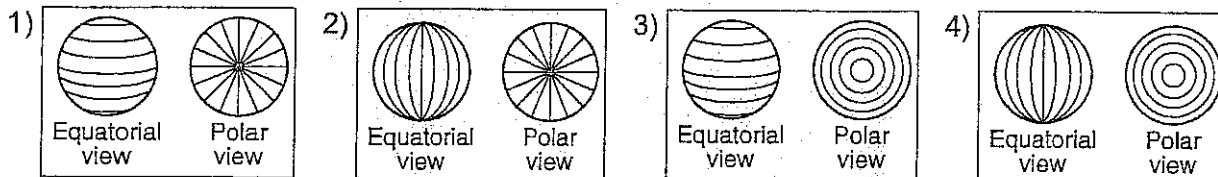


Name: _____

1) How are latitude and longitude lines drawn on a globe of the Earth?

- ☐ 1) Latitude lines are parallel and longitude lines meet at the Equator.
- ☐ 2) Longitude lines are parallel and latitude lines meet at the poles.
- ☐ 3) Latitude lines are parallel and longitude lines meet at the poles.
- ☐ 4) Longitude lines are parallel and latitude lines meet at the Equator.

2) The lines on which set of views *best* represent Earth's latitude system?



3) What is the approximate location of the Tasman Hot Spot in the Pacific Ocean?

- 1) 36° N 160° W
- 2) 160° S 36° E
- 3) 160° N 36° W
- 4) 36° S 160° E

4) Which New York State city is located at $42^{\circ}39'$ N $73^{\circ}45'$ W?

- 1) Ithaca
- 2) Plattsburgh
- 3) Buffalo
- 4) Albany

5) The approximate latitude of Utica, New York, is

- ☐ 1) $5^{\circ}15'$ E
- ☐ 2) $43^{\circ}05'$ N
- ☐ 3) $43^{\circ}05'$ S
- ☐ 4) $75^{\circ}15'$ W

6) New York State's highest peak, Mt. Marcy is located at approximately

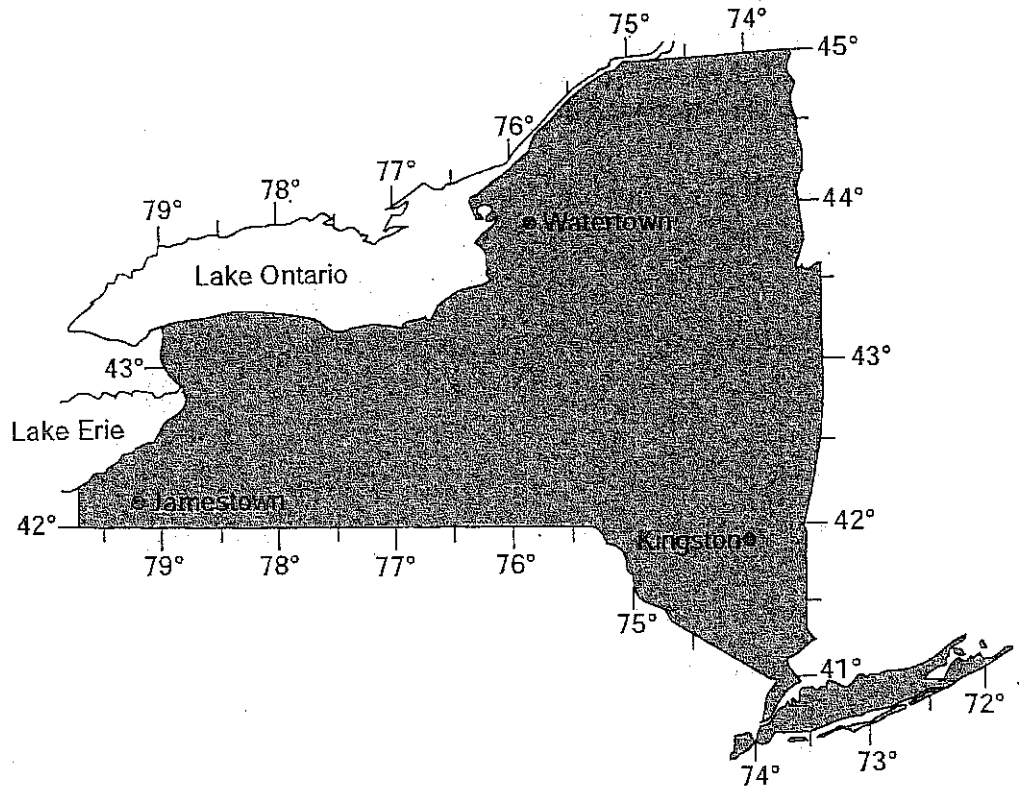
- 1) $74^{\circ}05'$ N $44^{\circ}05'$ W
- 2) $44^{\circ}05'$ N $73^{\circ}55'$ W
- 3) $73^{\circ}55'$ N $44^{\circ}10'$ W
- 4) $44^{\circ}10'$ N $74^{\circ}05'$ W

1.	1.
2.	2.
3.	3.
4.	4.
5.	5.
6.	6.
7.	7.
8.	8.
9.	9.
10.	10.
11.	11.
12.	12.
13.	13.
14.	14.
15.	15.
16.	16.
17.	17.
18.	18.
19.	19.
20.	20.

Topic 2 HW
DONOVAN
NAME.

Questions 7 and 8 refer to the following:

The map below shows the locations of Jamestown, Watertown, and Kingston in New York State.



7) Earth's system of longitude is based on which motion?

- | | |
|-----------------------|--------------------------------------|
| 1) Earth's rotation | 3) Earth's revolution around the Sun |
| 2) the Sun's rotation | 4) the Sun's revolution around Earth |

8) An observer in Watertown, New York, would see the star *Polaris* at an altitude of approximately

- | | | | |
|--------|--------|--------|--------|
| 1) 44° | 2) 45° | 3) 75° | 4) 76° |
|--------|--------|--------|--------|

9) If an observer on Earth views *Polaris* on the horizon, the observer is located at the

- | | |
|------------------------------|---------------------------------|
| 1) Tropic of Cancer (23.5°N) | 3) North Pole (90°N) |
| 2) equator (0°) | 4) Tropic of Capricorn (23.5°S) |

10) Approximately which percentage of Earth's surface is exposed above water?

- | | | | |
|--------|--------|--------|--------|
| 1) 50% | 2) 70% | 3) 30% | 4) 90% |
|--------|--------|--------|--------|

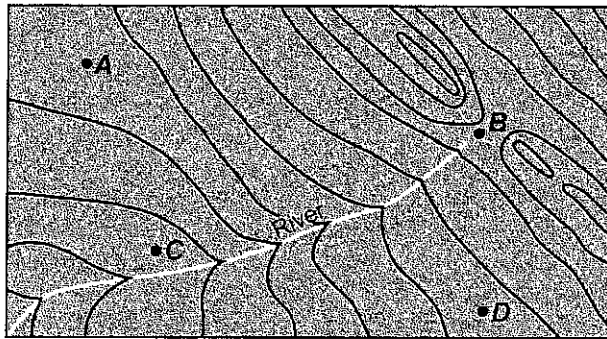
11) Which list shows atmospheric layers in the correct order upward from the Earth's surface?

- 1) thermosphere, troposphere, mesosphere, stratosphere
- 2) stratosphere, mesosphere, troposphere, thermosphere
- 3) thermosphere, mesosphere, stratosphere, troposphere
- 4) troposphere, stratosphere, mesosphere, thermosphere

12) In which atmospheric layer is most water vapor found?

- 1) thermosphere
- 2) troposphere
- 3) mesosphere
- 4) stratosphere

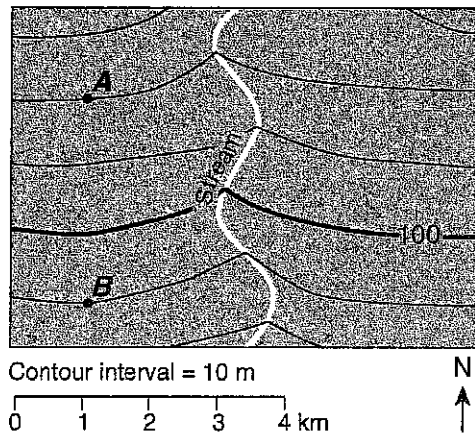
13) Four locations, A, B, C, and D, are represented on the topographic map below.



Which lettered location has the *highest* elevation?

- 1) A
- 2) D
- 3) C
- 4) B

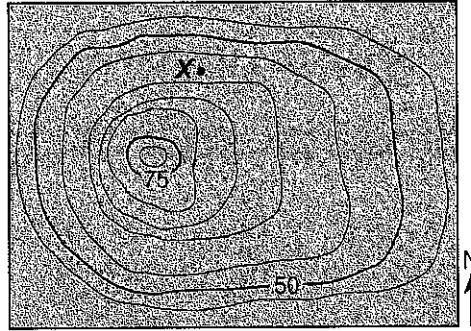
14) The topographic map below shows the location of a stream. Points A and B are locations on Earth's surface.



What is the gradient between points A and B?

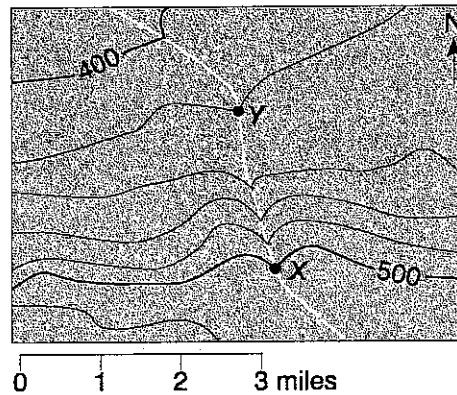
- 1) 10 m/km
- 2) 20 m/km
- 3) 1 m/km
- 4) 2 m/km

- 15) Point X is a location on the topographic map below. Elevations are measured in meters.



What is a possible elevation, in meters, of point X?

- 1) 55 2) 70 3) 57 4) 68
- 16) The topographic map below shows a stream crossing several contour lines and passing through points X and Y. Elevations are measured in feet.

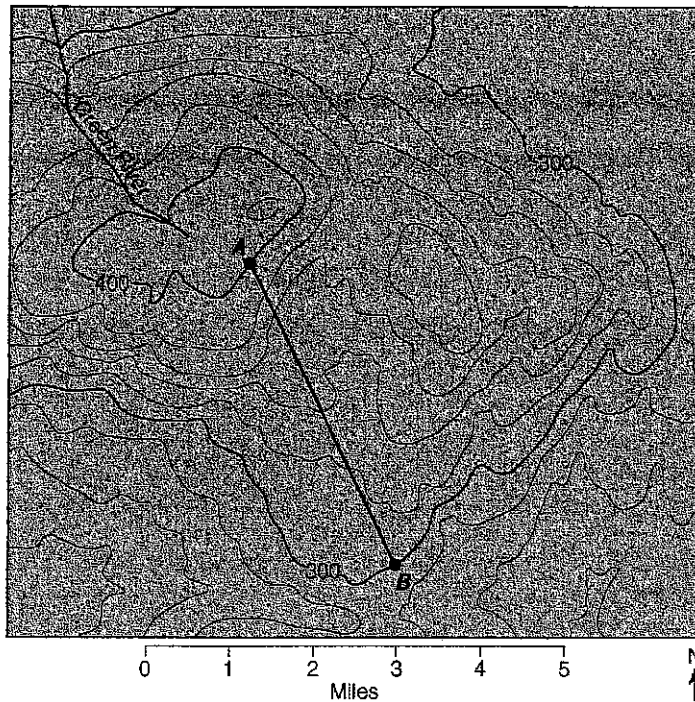


What is the approximate gradient between point X and point Y?

- 1) 40 ft/mi 2) 10 ft/mi 3) 80 ft/mi 4) 20 ft/mi

Questions 17 through 20 refer to the following:

A topographic map is shown below. Elevations are in feet. Points *A* and *B* are locations on the map.



- 17) According to the map shown, toward which direction does the Green River flow?
- 1) southeast 2) southwest 3) northeast 4) northwest
- 18) What is the gradient along the straight line between points *A* and *B* shown on the map?
- 1) 35 ft/mi 2) 25 ft/mi 3) 10 ft/mi 4) 20 ft/mi
- 19) What evidence can be used to determine that the land surface in the northeast corner of the map shown is relatively flat?
- 1) the dark contour line labeled 300 3) a large region covered by water
2) a rapidly flowing river 4) the absence of many contour lines

20) Which of the following graphs *best* represents the profile along line AB shown on the map?

