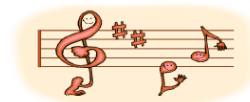


# Lake Shore Central Schools Music Department Calendar 2021 – 2022



<u>DATE</u>	<u>DAY</u>	<u>EVENT</u>	<u>TIME</u>	<u>LOCATION</u>
Aug.	Sun. Tues.	NYS Summer Music Conference	TBA	Albany, NY
<b>Oct. 1</b>	<b>Fri.</b>	<b>Sr. High Homecoming Events</b>	<b>4:00pm</b>	<b>Senior High</b>
Oct. 23	Sat.	ECMEA Classroom Music Festival	9:00am	Windemere Elm- Amherst
Nov. 5-6	Fri., Sat.	Jr. High Area All State (Grades 7-9)	TBA	TBD
<b>Nov. 8</b>	<b>Mon.</b>	<b>Sr. High Fall Concert (all groups)</b>	<b>7:00pm</b>	<b>Senior High</b>
Nov. 19-20	Fri., Sat	Sr. High Area All State (Grades 10-12)	TBA	SUNY Fredonia
Dec. 2-5	Thurs. Sun.	NYSSMA All State Conference	TBA	Rochester, NY
<b>Dec. 8</b>	<b>Wed.</b>	<b>J. T. Waugh Concert (Vocal)</b>	<b>7:00pm</b>	<b>J. T. Waugh</b>
<b>Dec. 9</b>	<b>Thurs.</b>	<b>Middle School Holiday I (Grade 7 &amp; 8)</b>	<b>7:00pm</b>	<b>Middle School</b>
<b>Dec. 14</b>	<b>Tues.</b>	<b>A.J. Schmidt Holiday Musical</b>	<b>7:00pm</b>	<b>A.J. Schmidt</b>
<b>Dec. 15</b>	<b>Wed.</b>	<b>Middle School Holiday II (Grade 6)</b>	<b>7:00pm</b>	<b>Middle School</b>
<b>Dec. 16</b>	<b>Thurs.</b>	<b>Highland (Grd 5 Band, Orch, Chorus)</b>	<b>7:00pm</b>	<b>Highland</b>
<b>Dec. 20</b>	<b>Mon.</b>	<b>Senior High Holiday "Alumni" Concert</b>	<b>7:00pm</b>	<b>Senior High</b>
<i>Dec. 21</i>	<i>Tues.</i>	<i>Snow Day Reschedule (if needed)</i>	<i>7:00 pm</i>	<i>TBA</i>
Jan. 8	Sat.	ECMEA Elementary, Jazz, & Jr. High Vocal Aud.	TBA	Depew MS/HS
Jan. 15	Sat.	ECMEA Jr. High Instrumental Auditions	TBA	Orch. Park HS
Jan. 22	Sat.	ECMEA Sr. High Instr./Vocal Quartet Auditions	TBA	BAVPA
<b>Jan 25</b>	<b>Tues.</b>	<b>Highland (Grd 4 Band, Orch, Chorus)</b>	<b>7:00pm</b>	<b>Highland</b>
Jan. 28	Fri.	ECMEA Conference Day	8am-4pm	Buff. Conv. Ctr.
<i>Jan. 29</i>	<i>Sat.</i>	<i>ECMEA Solo Fest Snow Day</i>	<i>TBA</i>	<i>TBA</i>
<b>Oct. 28-30</b>	<b>Thurs - Sat</b>	<b>Senior High Musical</b>	<b>7pm, 7pm, 2pm</b>	<b>High School</b>
<b>March 3-5</b>	<b>Thurs - Sat</b>	<b>Middle School Musical</b>	<b>7:00pm</b>	<b>Middle School</b>
<b>Feb. 17</b>	<b>Thurs.</b>	<b>J. T. Waugh Winter (Grd 4&amp;5 Band &amp; Orch)</b>	<b>7:00pm</b>	<b>J. T. Waugh</b>
March 5,9,11-12	Sat, Wed, Fri, Sat	ECMEA Elementary Rehearsals & Concert	TBA	Sweethome, Kleinans
March 11-12	Fri. - Sat.	ECMEA Jazz Ensemble Reh. & Concert	TBA	Cheektowaga
<b>March 15</b>	<b>Tues.</b>	<b>Secondary Band Concert (Grades 6-12)</b>	<b>7:00pm</b>	<b>Middle School</b>
March 18-19	Fri. - Sat.	ECMEA Jr. High Rehearsal & Concert	TBA	Lancaster
<b>March 22</b>	<b>Tues.</b>	<b>A.J. Schmidt Concert (Band &amp; Orch)</b>	<b>7:00pm</b>	<b>Middle School</b>
<b>March 23</b>	<b>Wed.</b>	<b>J.T. Waugh Concert (Band, Orch, Chorus)</b>	<b>7:00pm</b>	<b>Middle School</b>
<b>March 24</b>	<b>Thurs.</b>	<b>Highland Concert (4<sup>th</sup> Grd Band, Orch, Chorus)</b>	<b>6:00pm</b>	<b>Middle School</b>
		<b>(5<sup>th</sup> Grd Band, Orch, Chorus)</b>	<b>7:00pm</b>	<b>Middle School</b>
March 25-26	Fri. - Sat.	ECMEA Sr. High Rehearsal & Concert	TBA	Univ. at Buff.
<b>March 31</b>	<b>Thurs.</b>	<b>Secondary Choral Concert (Grades 6-12)</b>	<b>7:00pm</b>	<b>Middle School</b>
<b>April 4</b>	<b>Mon.</b>	<b>Elementary Instrumental Recruitment Assembly</b>	<b>10am Day Assm</b>	<b>Middle School</b>
<b>April 5</b>	<b>Tues.</b>	<b>Side-by-Side Orchestra Concert (Grades 6-12)</b>	<b>7:00pm</b>	<b>Middle School</b>
<b>April 26</b>	<b>Tues.</b>	<b>District Jazz Concert</b>	<b>7:00pm</b>	<b>Middle School</b>
May	Fri. - Sat.	NYSSMA Solo Auditions & Major Org. Festivals	TBA	TBD
<b>May 18</b>	<b>Wed.</b>	<b>Middle School Spring I – Chorus</b>	<b>7:00pm</b>	<b>Middle School</b>
<b>May 24</b>	<b>Tues.</b>	<b>Middle School Spring II – Band</b>	<b>7:00pm</b>	<b>Middle School</b>
<b>May 30</b>	<b>Mon.</b>	<b>Memorial Day Events</b>	<b>TBA</b>	<b>Angola</b>
<b>June 1</b>	<b>Wed.</b>	<b>J. T. Waugh Spring (Band, Orch, Chorus)</b>	<b>7:00pm</b>	<b>Angola Gazebo</b>
<b>June 2</b>	<b>Thurs.</b>	<b>A. J. Schmidt Evening with the Arts</b>	<b>6:30pm</b>	<b>A. J. Schmidt</b>
<b>June 6</b>	<b>Mon.</b>	<b>Senior High Spring Concert (all groups)</b>	<b>7:00pm</b>	<b>Middle School</b>
<b>June 8</b>	<b>Wed.</b>	<b>Middle School Spring III – Orchestra</b>	<b>7:00pm</b>	<b>Middle School</b>
<b>June 9</b>	<b>Thurs.</b>	<b>Highland Spring Concert (Band, Orch, Chorus)</b>	<b>7:00pm</b>	<b>Highland</b>

TBA - "To Be Announced" \* TBD - "To Be Determined" \* District Events in BOLD